



**CORNERSTONE**  
DEVELOPMENT



CEO  
Eng. Ashraf Boulos

---

Ashraf Boulos is the Co-Founder and acting CEO of Cornerstone Developments. With over 30-years-worth of accumulated experiences, he has enriched the development and contracting sector with his far-sighted vision, prestige and class with evidential success both domestically and abroad.

He is the descendant of a long line of industry connoisseurs; foremost of all is his father, who was one of Egypt's most prominent industry figures in the 70's and 80's. Following in his father's footsteps, he worked on expanding the family business, developing new notable towers and office buildings in metropolitan Cairo & Alexandria.

He also lent his vast expertise as a consultant to the Egyptian government and other domestic and international companies, maintaining the same level of class and efficiency for which he was widely known. His work on the Aya Napa Cyprus Marina Mega project of overseeing all major operations was held in the highest regards in the development circle. His continued amassing of experiences and his willingness to venture beyond industry norms is what helped with the birthing of Cornerstone's flagship project, the curve.



# New Administrative Capital

Egypt is switching its capital city from Cairo to a brand-new constructed city “New Administrative Capital”. It is a Smart Capital city that introduces a modern concept of residence and is expected to accommodate from 18 million people to 40 million people by 2050. The new megalopolis in Egypt is built to create many opportunities for housing and employment, putting in mind that Egypt’s population will almost double in the next 40 years. The city aims to address the various issues facing Egypt and provide a distinct quality of life that adapts to the conditions of population growth and civilization by welcoming all levels of income and culture in a smart city that keeps abreast of technological progress.



NEW CAPITAL



MIDDLE EAST MAIN BUSINESS HUB

NEW CAPITAL



GREEN RIVER, VAST PARK, &  
NUMEROUS RESTAURANTS

NEW CAPITAL



GREEN RIVER, PARK,  
WATER FEATURES

5+

تحالف التنمية العمرانية  
Urban Development Consortium

NEW CAPITAL



5+  
UDC  
www.udc3.com

MANHATTAN STYLE SKYSCRAPERS

NEW CAPITAL



PRESTIGIOUS SKYLINE



NEW CAPITAL



FOOTBALL STADIUM

# NEW CAPITAL

القصر الرئاسي  
Presidential Palace

المنصة الرئاسية  
Presidential Platform

ساحة الاحتفالات  
Festival Piazza

مبنى مجلس الوزراء  
Cabinet Building

بوابة الشعب  
People's Gateway

مبنى البرلمان  
Parliament

ساحة البرلمان  
Parliament Piazza

5+  
UDC

PARLIAMENT & MINISTRIES

Parliament & People's Piazza منطقة مبنى البرلمان وساحة الشعب

Egypt's Presidential Palace

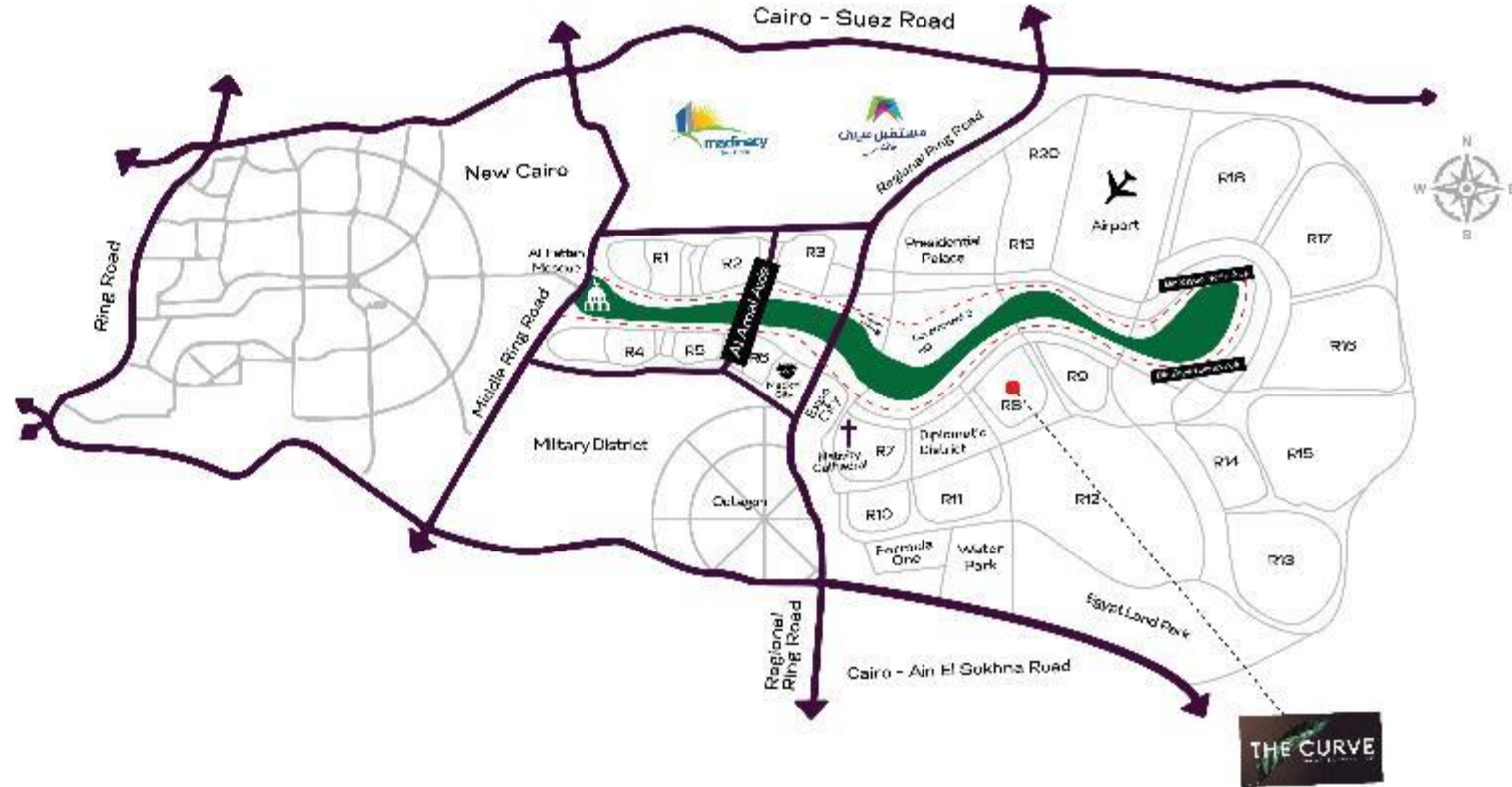
O BELISK

# GENERAL MAP

## NEW CAPITAL MAP

- ◆ 2 km from Bin Zayed South Axis
- ◆ 7 km from Bin Zayed North Axis
- ◆ 11 km from Regional Ring Road
- ◆ 20.5 km from Cairo / Ain El Sokhna Road

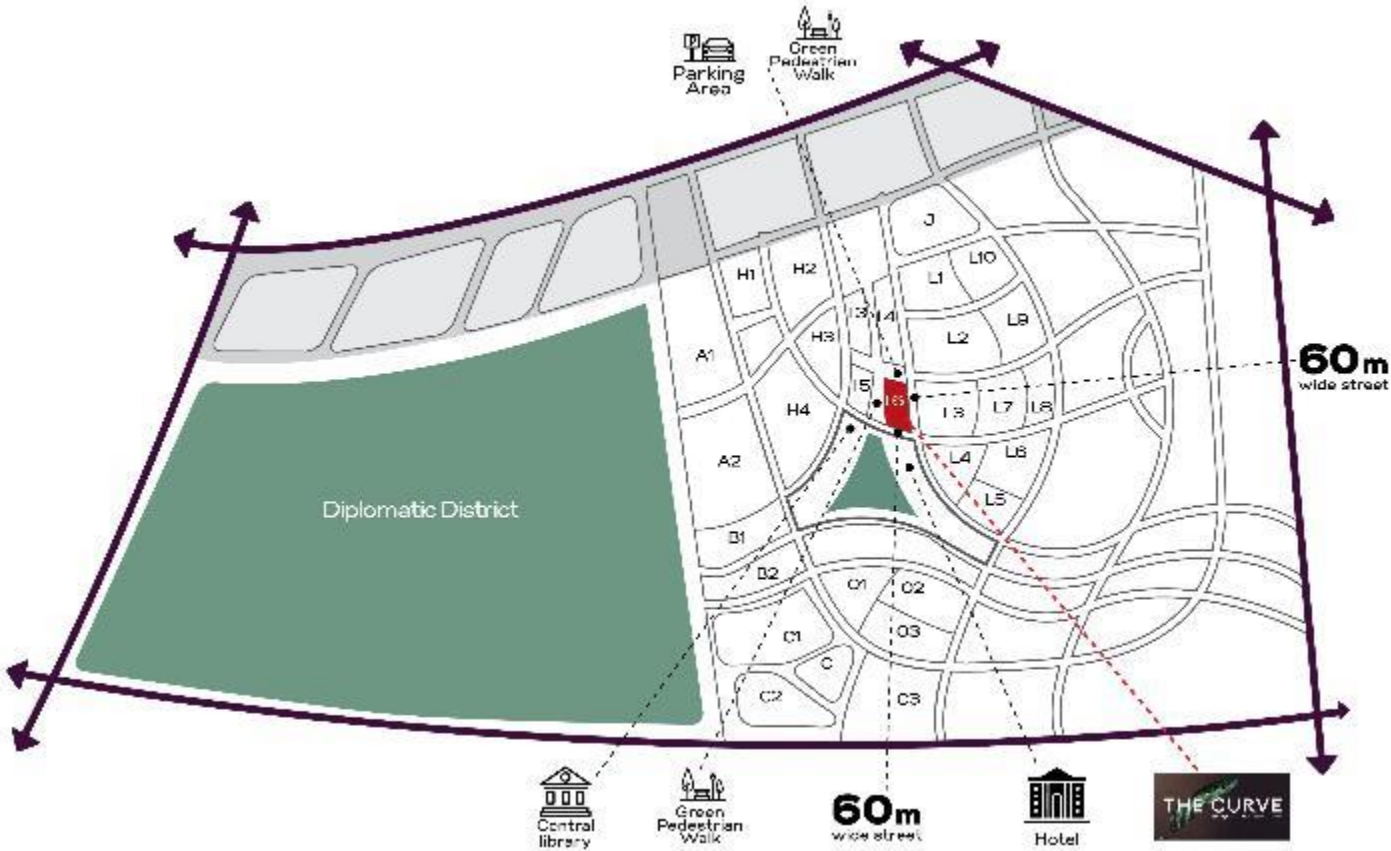
- ◆ 21 km from Al Amal Axis
- ◆ 25 km from Middle Ring Road
- ◆ 51 km from Cairo / Suez Road



# MAP - R8

## Master Plan

New Administrative Capital - i 6



# MAP - 16



# MASTER PLAN





# THE CURVE

PENTHOUSES | APARTMENTS | LOFTS

WE LIVE HERE... JOIN US

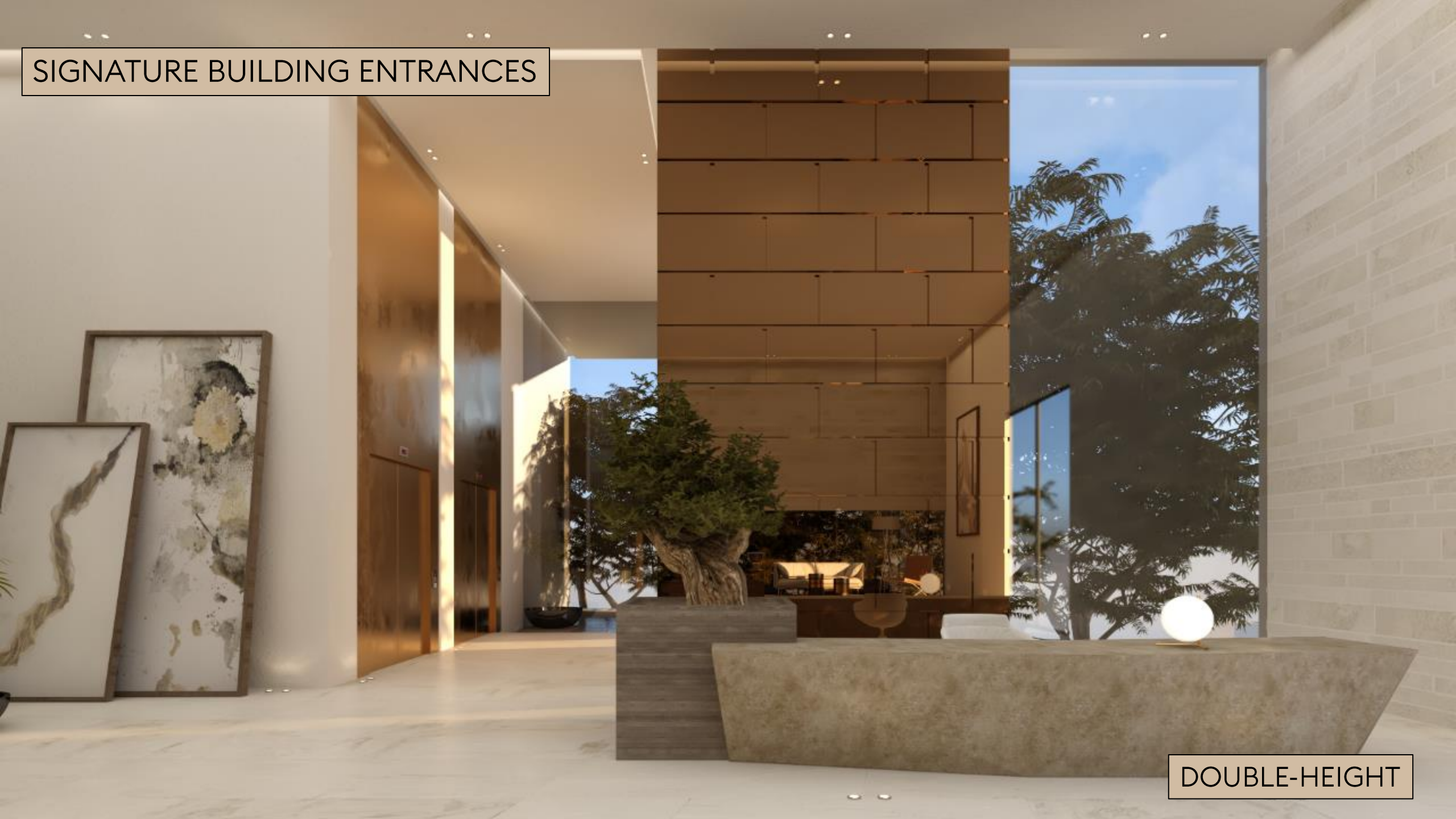
ARCHITECTURAL  
DESIGN NEW YORK



DOUBLE-HEIGHT  
PANORAMIC VIEWS



SIGNATURE BUILDING ENTRANCES



DOUBLE-HEIGHT

# BUILDING ENTRANCES



GROUND FLOOR LOUNGE

# MULTI-PURPOSE TREE LOUNGE



IN EVERY BUILDING  
IN THE 2<sup>ND</sup> FLOOR

GARDEN DUPLEX



DOUBLE HEIGHT DUPLEX WITH GARDEN POOL

GROUND FLOOR DUPLEX



DOUBLE HEIGHT

LOFT



6<sup>TH</sup> FLOOR LOFT  
ROOFTOP GARDEN

LOFT POOL



LUXURIOUS 6<sup>TH</sup> & 7<sup>TH</sup> FLOOR LOFTS



ULTRA-MODERN LANDSCAPES

REFLECTIVE POOLS &  
NARRATIVE PLANTS



ULTRA-MODERN LANDSCAPES



ULTRA-MODERN LANDSCAPES



GALLERY GARDEN

INCORPORATING ART  
IN OUR LANDSCAPE



# OUR AMENITIES



# SOCIAL HOUSE



WE CREATE DESTINATIONS THAT EMPOWER PEOPLE TO LIVE THEIR BEST TOGETHER

# SOCIAL HOUSE



APERITIVO CORNER

# SOCIAL HOUSE



LISTENING LIBRARY

# SOCIAL HOUSE



KID'S CREATIVE LOUNGE

NURSERY



# SOCIAL HOUSE



ALFRESCO BARBECUE AND GRILL

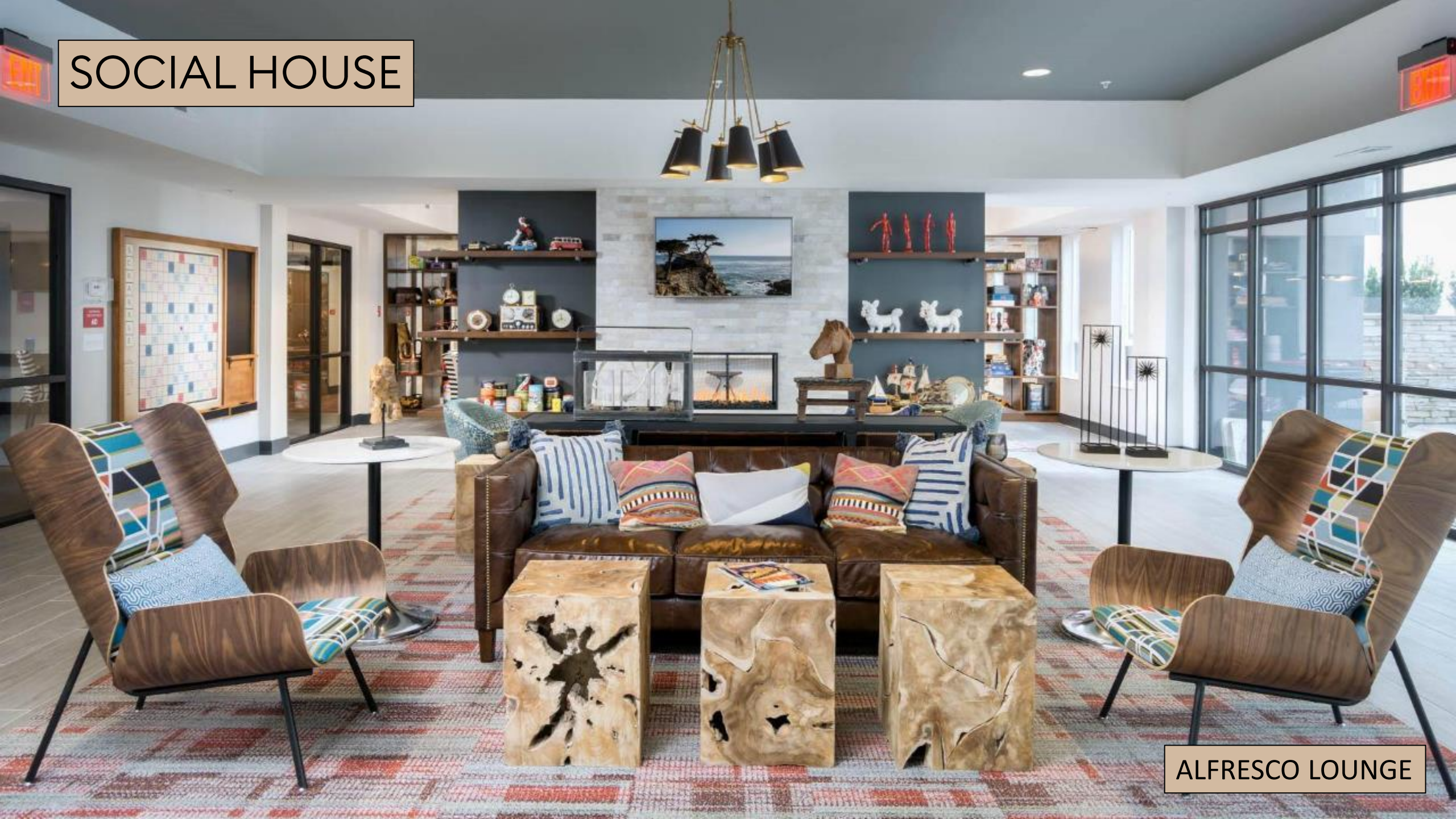
# SOCIAL HOUSE



ALFRESCO KITCHEN

NO SPACE IN YOUR HOUSE?  
RESERVE OUR ALFRESCO KITCHEN

# SOCIAL HOUSE



ALFRESCO LOUNGE

# SOCIAL HOUSE



ALFRESCO ACTIVITIES

SOCIAL HOUSE



CINEMA ROOM

# CLUBHOUSE



WE CREATE ACTIVITIES THAT EMPOWER PEOPLE TO BE HEALTHY AND LIVE WELL

CLUBHOUSE



INDOOR/OUTDOOR HEATED POOL

# CLUBHOUSE





# CLUBHOUSE



CLUBHOUSE



OUTDOOR AREA

CLUBHOUSE



MULTI-PURPOSE PLAYFUL COURT

CLUBHOUSE



ZEN & YOGA ROOM

CLUBHOUSE



PELOTON BIKES & ONLINE GYM



COMMERCIAL STRIP



The Curve  
Commercial

Debenhams



*The Curve*  
*Commercial*





The Curve  
Commercial

The Curve

Commercial

Del'aclo

DEL'aclo

Gulfika

IT'S

# UNIT SAMPLES



# THE CURVE

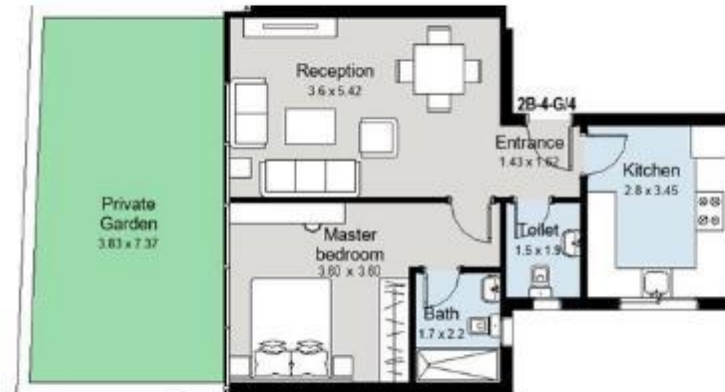
PENTHOUSES | APARTMENTS | LOFTS



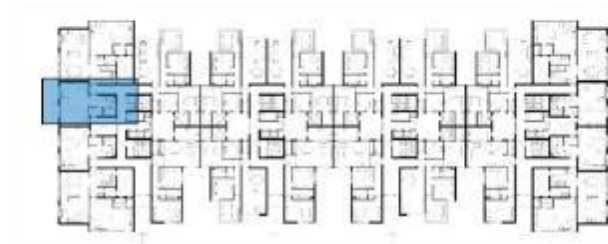
# 1 BEDROOM APARTMENT

## Plans

APP-1- 2B-4-G/4



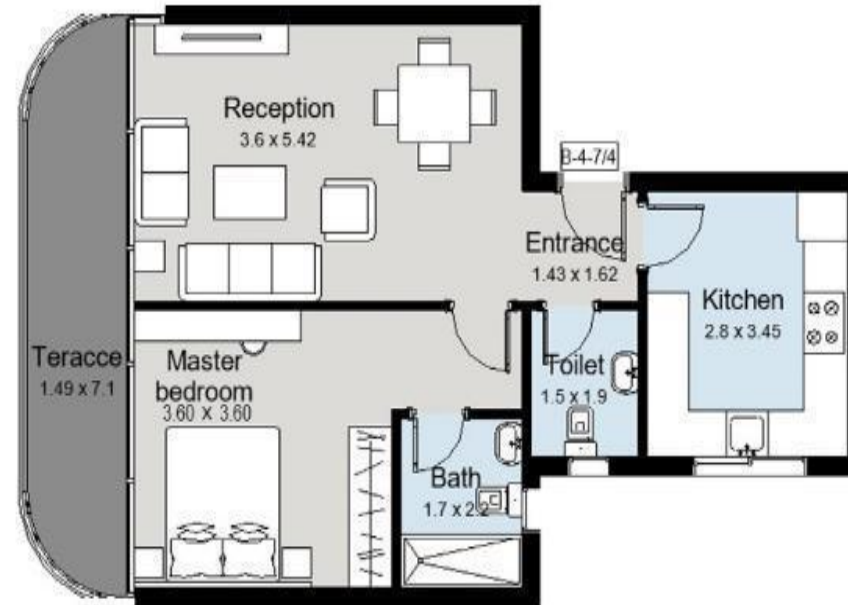
Apartment Ground Floor  
Gross Area 76 m  
Garden Area 31 m



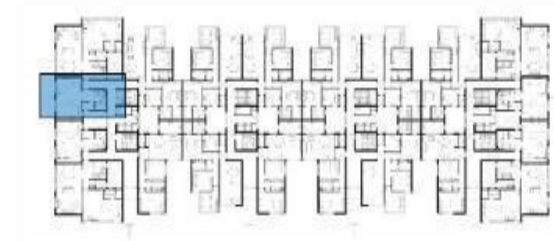
# 1 BEDROOM APARTMENT

## Plans

APP-1- 1B-4-7/4



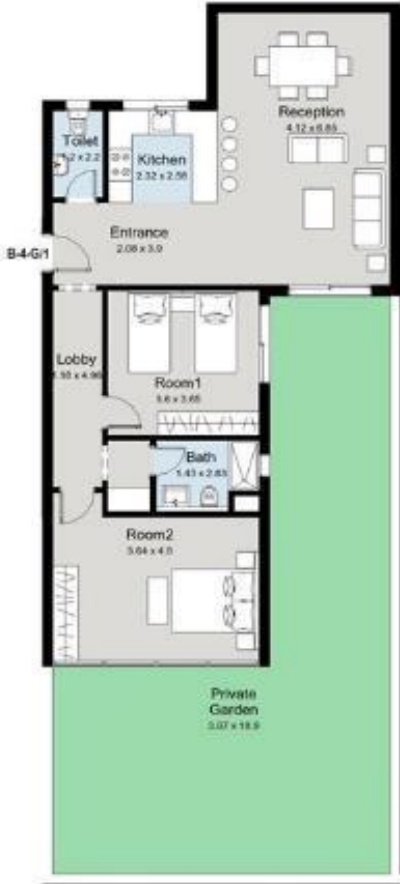
Apartment 7th Floor  
Gross Area 90 m



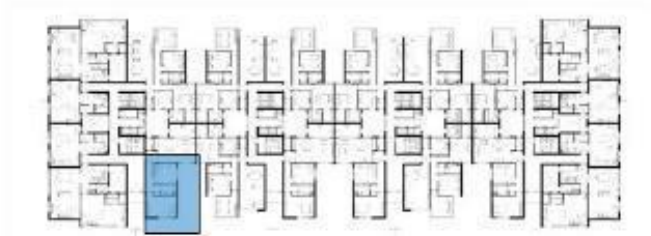
# 2 BEDROOM APARTMENT

## Plans

APP-2- 1B-4-G/1



Apartment Ground Floor  
Gross Area 124 m  
Garden Area 74 m



# 3 BEDROOM APARTMENT

Plans  
APP-3- 2B-3-3/2



Apartment Third Floor  
Gross Area 180 m



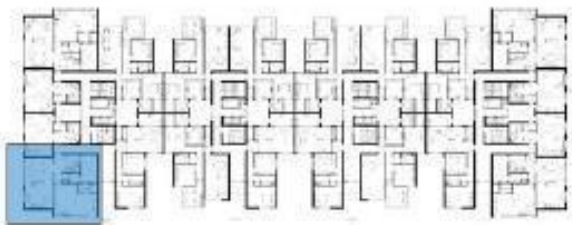
# 3 BEDROOM APARTMENT

**Plans**

APP-3- 1B-4-2/2



Apartment Second Floor  
Gross Area 158 m



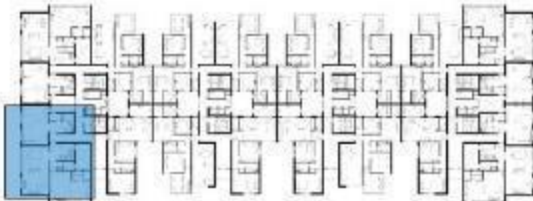
# 4 BEDROOM APARTMENT

## Plans

APP-4- 2B-4-5/2



Apartment 5th Floor  
Gross Area 248 m





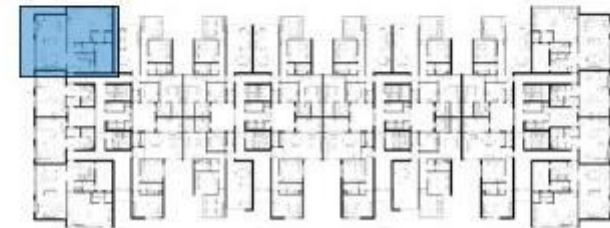
# DUPLEX TYPE 1

## Plans

DU- 1B-4-6/5



DU 6th Floor  
Gross Area 304 m



# DUPLEX TYPE 2

## Plans

DU- 2B-4-G/5



Apartment Ground Floor  
Gross Area 285 m  
Garden Area 140 m



# DUPLEX TYPE 3

## Plans

DU - 2B-4-6/4



WE LIVE HERE... JOIN US

